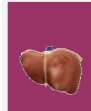


# OR set-up for brain dead organ recovery



Kidney Table



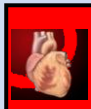
Liver Table



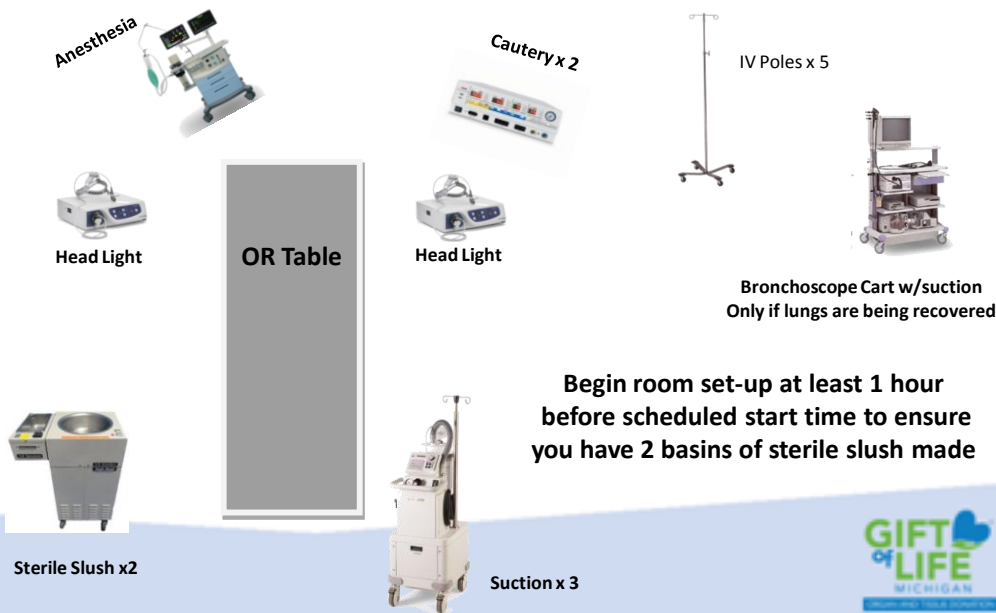
Sterile Back Table



Lung Table



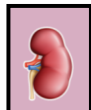
Heart Table



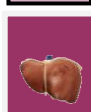
Begin room set-up at least 1 hour before scheduled start time to ensure you have 2 basins of sterile slush made



# OR set-up for DCD organ recovery



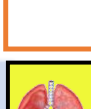
Kidney Table



Liver Table

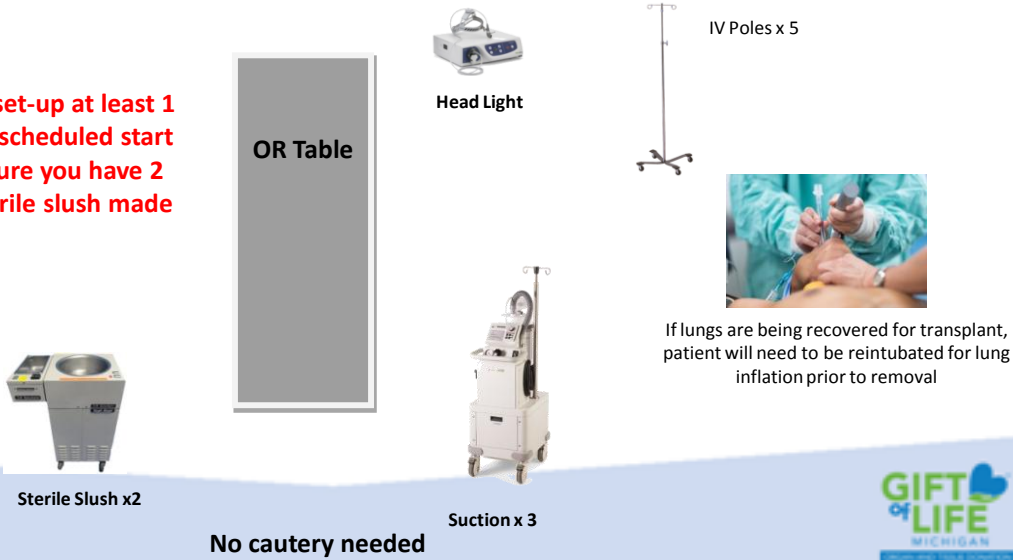


Sterile Back Table



Lung Table

Begin room set-up at least 1 hour before scheduled start time to ensure you have 2 basins of sterile slush made



No cautery needed



# Gift of Life Michigan Organ Procurement

## Operating Room Patient Set-up and Supply List



Patient position: Supine

Shoulder Roll

Arms tucked (no sleds or arm boards)

Shave from neck down to groin

Chlorhexidine surgical prepx2

General Supplies	Qty
Suction	3
Pool tip suctions	3
Yankauer suction tips	3
Cautery	2
Cautery tip cleaner	2
U drape or CV drape	1
Sterile gowns (level 4)	8
Syringe Blub	2
20cc syringe	2
18g IV and Needle	1
0, 2-0 and 3-0 silk tie	1
0 Ethibond	2
Umbilical tapes	4
4-0 Prolene on cv/rb	1
2-0 silk on SH	1
Vessel Loops	2
Skin stapler	1
10, 11 and 15 blades	1
Ring basins (basins only)	4
Bottle of warm or room temp sterile saline	1
Bottles of cold saline for slush machine (6 in each)	2
Saw blade	1
Bone wax	2
Pitcher (500cc)	1
Lap sponges	15
Sterile towels	15

Retractors
Ribbon Retractor
Army/Navy Retractor
1 1/2" Deaver Retractor
2" Deaver Retractor
Lg Richardson Retractor
Sm. Richardson Retractor
Morse Chest Retractor
Extra Large Spike Balfour

General Instruments	Qty
8" Mayo-Hegar Needle Driver	2
7" Mayo- Hegar Needle Driver	4
6" Mayo- Hegar Needle Driver	2
8" Kelly Clamp	4
8" Kocher-Ochsner Forceps	4
8 Babcock Forceps	2
6" Babcock Forceps	2
6" Allis Forceps	2
7 1/2" Allis Forceps	4
Tonsil Forceps	6
Cvd Crile Hemostat	14
St. Crile Hemostat	4
Cvd Mosquito	4
St. Mosquito	2
Clamps, Scissors & Right Angles	Qty
12" Cvd Debakey Aortic Clamp	1
Small Satinsky Clamp	1
Med. Satinsky Clamp	1
Lg. Satinsky Clamp	1
Cvd Cooley Coarctation Clamp	1
St. Cooley Coarctation Clamp	1
10" Cvd Kocher-Ochsner Forceps	1
10" St. Kocher- Ochsner Forceps	1
11 1/8" Gemini Rt. Angle	1
9" Gemini Rt. Angle	2
7" Gemini Rt. Angle	4
Sponge Forceps	1
Bandage Scissor	1
St. Mayo Scissor	2
Cvd Mayo Scissor	2
9 1/4" Metzenbaum Scissor	1
7" Metzenbaum Scissor	8
9" Cvd Mayo Scissor	2
Non Perforating Towel Clamp	6
Perforating Towel Clamp	6
Forceps Knife Handles	Qty
Bonnie Tissue Forceps	2
Cushing Tissue Forceps/ Gold handle	1
7" Debakey Forceps	8

### Mayo Stand Set-Up

0, 2-0, 3-0 ties (on passer)

Umbilical tape (on passer)

2 Metz's

2 Curved Mayo Scissors

2 Small right angles

2 Long right angles

2 Kelly's

4 Tonsils

2 Kockers

8 Hemostats

4 Long Debakey

4 Short Debakey

### Have in room but do not open

Small, medium and large clips

GIA 60 Stapler and refills

TA Stapler and refills

TA Vascular Stapler and refills

Back table cover (4)

4-0 Prolene on SH (4)

Ligature

Finochietto chest retractor

Perfusion cannulas (provided by

GOLM personnel)

### Internal Defibrillator Paddles

#### & Defibrillator

Please start making sterile

slush 1 hour prior to

incision time

### Individual Table Set-Up

Heart Table: 1 Short

Metzenbaum,

2 Debakey Forceps

Lung Table: 1 Metzenbaum,

2 Debakey Forceps

Liver: 1 Debakey Forceps

Intestine: Nothing

Pancreas: Nothing

Kidneys: 1 Short Metzenbaum

1 Debakey Forceps

2 Cvd Mosquito